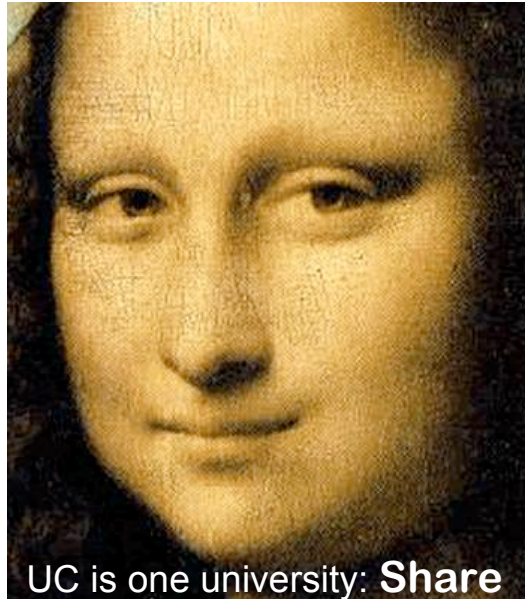


# UC Shared Images

Delivering essential image collections UC-wide



Berkeley  
Davis  
Irvine  
Los Angeles  
Merced  
Riverside  
San Diego  
Santa Barbara  
Santa Cruz  
CDL

UCCSC 2008 July 22, 2008 Santa Barbara

# Project Contacts

- Lena Zentall
  - California Digital Library, UC Image Service Manager
  - [www.cdlib.org/inside/projects/image](http://www.cdlib.org/inside/projects/image)
  - [lena.zentall@ucop.edu](mailto:lena.zentall@ucop.edu)
- Megan Marler
  - ARTstor User Services Project Manager
  - [www.artstor.org](http://www.artstor.org)
  - [UserServices@ARTstor.org](mailto:UserServices@ARTstor.org)
- Jackie Spafford
  - UCSB Visual Resources Curator, History of Art & Architecture
  - [www.arthistory.ucsb.edu](http://www.arthistory.ucsb.edu)
  - UCSB ARTstor Administrator
  - [spafford@arthistory.ucsb.edu](mailto:spafford@arthistory.ucsb.edu)

# Setting the context

- **What is UC Shared Images?**
  - shared collections hosted in ARTstor open to all UC
- **How did it start?**
  - Visual Resources Curators desire to share with each other and to provide access to images for teaching
- **Why now?**
  - ✓ Faculty teaching with digital images
  - ✓ Standards maturing (cataloging, sharing)
  - ✓ Slides becoming obsolete
  - ✓ VRCs implementing digital image management systems

# Who's in?

- **CDL**
  - **strategic planning, facilitation**, licensing, co-investment, policy, communication, system-wide advisory committees
- **Libraries**
  - principal **funders** of shared licensed collections; supporters of broad access, involved in digital **preservation**
- **Visual Resources Curators**
  - collection builders, cataloging/subject experts, best group to begin **shared collection development**
- **Educational Technology**
  - **supporting** faculty personal collections and end-user tools
- **Faculty/Students**
  - aggregators of images, **end-users**

# Who's supporting it?

- **support liaisons (at each campus)**
  - assist end-users; grant instructor-level privileges; relay technical updates
- **collection liaisons (at each campus)**
  - manage collection building in ARTstor
- **collection development and management groups (optional)**
  - decide which collections go into ARTstor at each campus
- **steering group (system-wide group)**
  - make strategic decisions

# An ideal collection is....

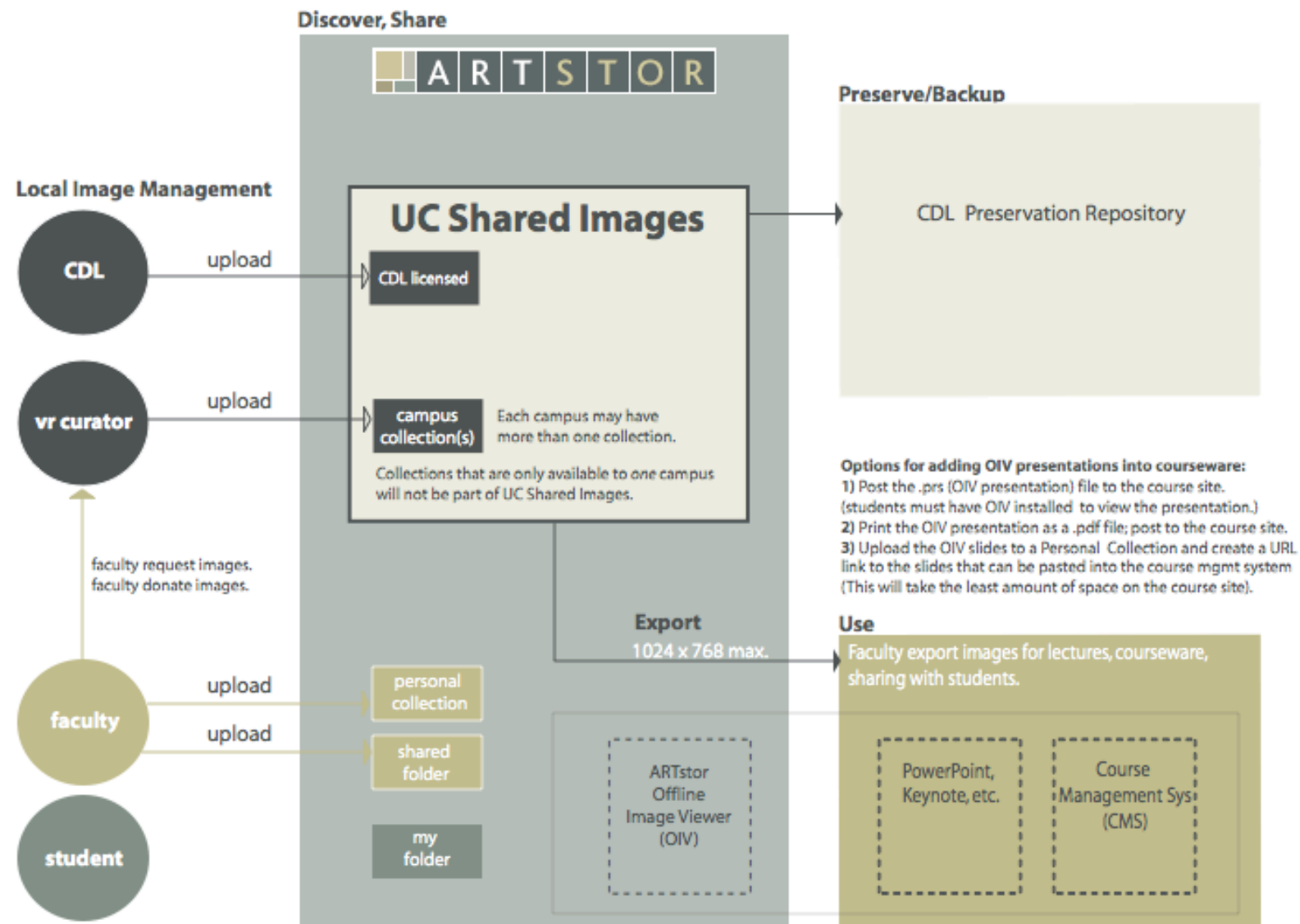
## Required

- Must be **shareable** across UC
  - see Terms of Use  
[http://www.imageservice.cdlib.org/terms\\_of\\_use.html](http://www.imageservice.cdlib.org/terms_of_use.html)

## Recommended

- Priority given to **instructional images**
  - and foremost to serving faculty whose primary instructional medium is images
- Contributes to **reducing redundancy**
  - e.g., some or all images meets the teaching needs of more than one campus, and some or all images are not readily available in another repository

# Workflow: UC Shared Images



Students can group and save images in ARTstor, but they do not have privileges to upload images into ARTstor.

# ARTstor/UC Shared Images Home page

**ARTSTOR**

History | Find Organize Share Display Options Tools

LOG IN TO ARTSTOR for advanced functionality

Not registered? Forget password? **LOG IN**


HELP

## SEARCH

Enter a keyword and Go!

All Collections

Read Search Tips **GO**




Use our **advanced search** to specify additional search criteria.

## BROWSE

Browse ARTstor by:

- GEOGRAPHY**  
(e.g., Afghanistan, Albania, Algeria,...)
- CLASSIFICATION**  
(e.g., painting, performing arts, photography,...)
- COLLECTION**  
(i.e., ARTstor, Institutional, Personal...)

## FOLDERS AND IMAGE GROUPS



**OPEN**

## INSTITUTIONAL COLLECTIONS

- UC Share: CDL Saskia Art & Architecture**
- Hosted Collection Workspace**
- UCSC Library's Instructional Collection**

## QUESTIONS?

Email your **institutional contact**  
Email **ARTstor**

**Funerary Mask**, 9th or 11th century | Peru; Sican (Lambayeque) | The Metropolitan Museum of Art | Image The Metropolitan Museum of Art

# UC Share: Saskia Home

ARTSTOR

History | Find Organize Share Display Options Tools

LOG IN TO ARTSTOR  
for advanced functionality

Not registered? Forget password? **LOG IN** **HELP**

## Browse

Select a collection type

### ARTstor Collections

- View by Geography
- View by Classification
- View by Collection

### Institutional Collections

- UC Share: CDL Saskia Art & Architecture
- Hosted Collection Workspace
- MSSC Library's Instructional Collection

Click for more information. Double-click to view images.

UC Share: CDL Saskia Art & Architecture



UC Share: CDL Saskia Art & Architecture

Saskia provides over 26,000 core art history images on Western European civilization from more than 100 museums worldwide including the Prado, the Kunsthistorisches Museum, the Uffizi, the Louvre, and the Metropolitan Museum in New York as well as archaeological sites in Greece, Italy, Turkey and Egypt. Includes selected African, Asian, and Pre-Columbian art. The California Digital Library has purchased the Saskia Archive to make these images available for educational and research use to all University of California campuses. Thumbnail images may be downloaded and integrated into an image database or similar software program; and may be made freely available to students and faculty. Images may not be redistributed outside of educational institutions.

# Browsing Saskia

ARTSTOR

History | Find Organize Share Display Options Tools

LOG IN TO ARTSTOR  
for advanced functionality

Not registered?  
Forget password? **LOG IN**

HELP

## Browse Collection

UC Share: CDL Saskia Art & Architecture

All Collections **GO**

Display advanced search

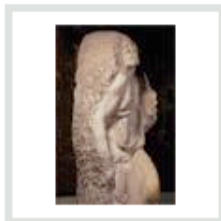
[26126] Record(s) Sort by: Title Creator Date

Page 800 of 1089

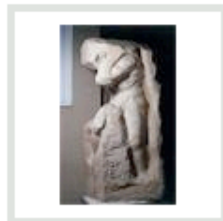
Click image to select. Double click to enlarge. Click caption to view full record.



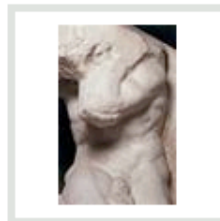
The Bearded Slave...  
Michelangelo (Italy,...  
1530-34



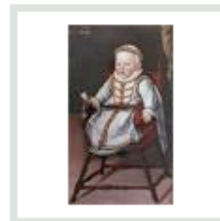
St. Matthew  
Michelangelo (Italy,...  
ca. 1506



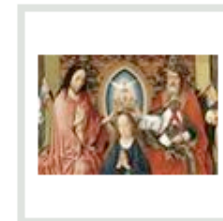
The 'Atlas' Slave...  
Michelangelo (Italy,...  
1530-34



The 'Atlas' Slave...  
Michelangelo (Italy,...  
1530-34



Archduchess...  
Vermeyen, Jan...  
1577



Coronation of the...  
Bouts, Dirk...  
1455/60



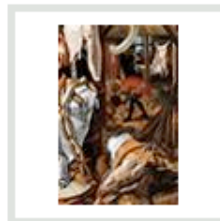
Queen Anna of Spain...  
Mor, Anthonis...  
1570 (signed &...



Man with a Black...  
Mor, Anthonis...  
3rd qtr. 16th c.



Christ Entering...  
Amstel, Jan van...  
1540



The Butcher Shop  
Aertsen, Pieter...  
1551



Still Life with...  
Aertsen, Pieter...  
1552 (signed)



S. Maria del...  
Lombardo, Pietro...  
1481-89